

188 Lafayette

SOHO MULTI-LEVEL
STORE FOR SUBLEASE



GROUND FLOOR:

2,200 SF (DIV.)

11'+ CEILING HEIGHT

60' FRONTAGE

PRIME SOHO EXPOSURE

SELLING BASEMENT:

2,200 SF

9'+ CEILING HEIGHT

MOVE-IN READY

SUBLEASE THRU DEC. 2022

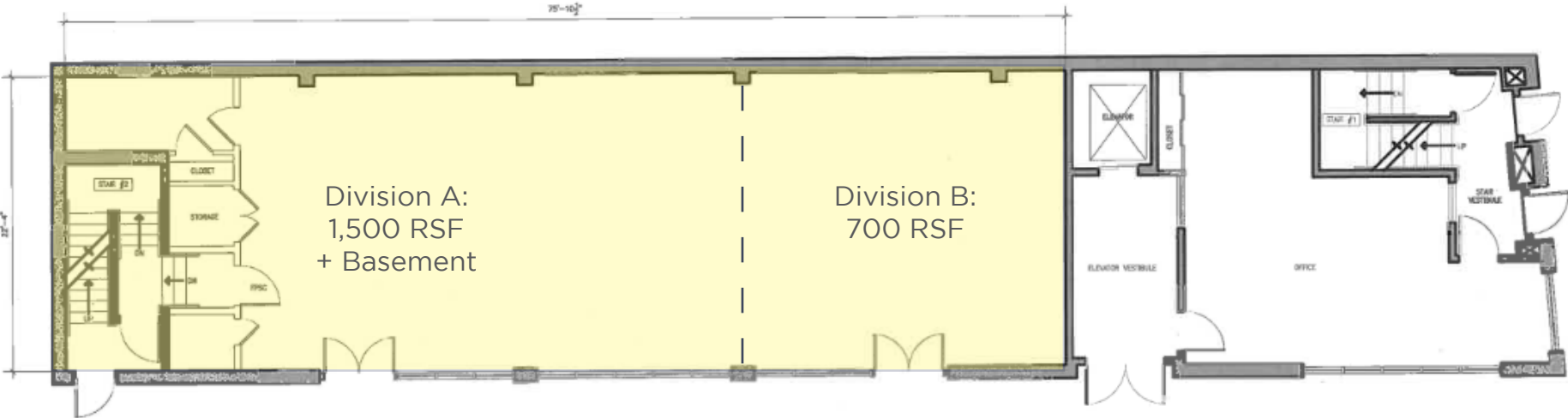
Greg Kim 646 470 1717
greg@sequoiapg.com | www.sequoiapg.com

SEQUOIA
PROPERTY GROUP

© Sequoia Property Group. All rights reserved. All information contained herein is from sources deemed reliable; however, no representation or warranty is made to the accuracy thereof.

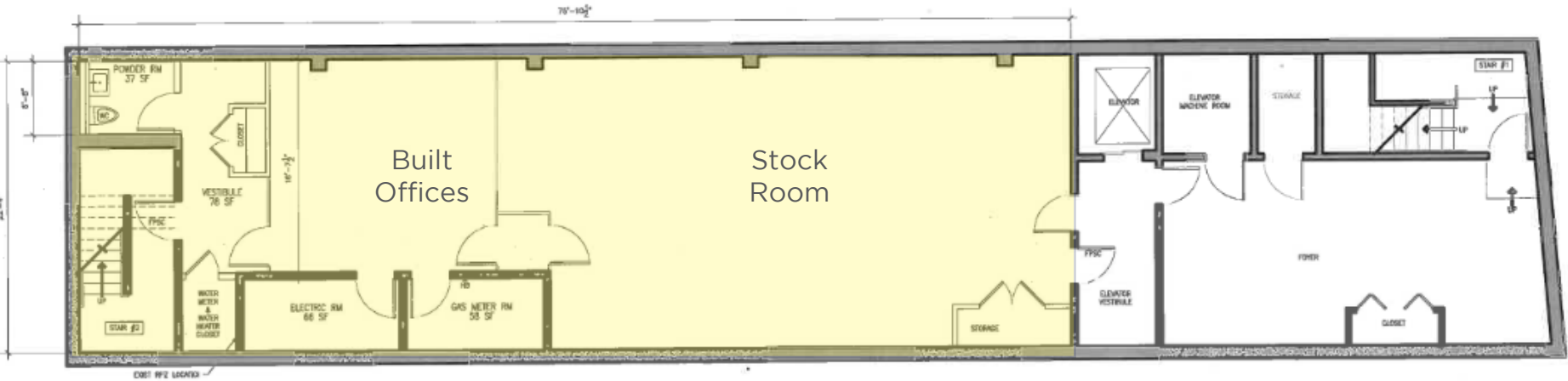
Floor Plans

Ground Floor
2,200 RSF



1 FIRST FLOOR PLAN
A001 SCALE: 1/4" = 1'-0"

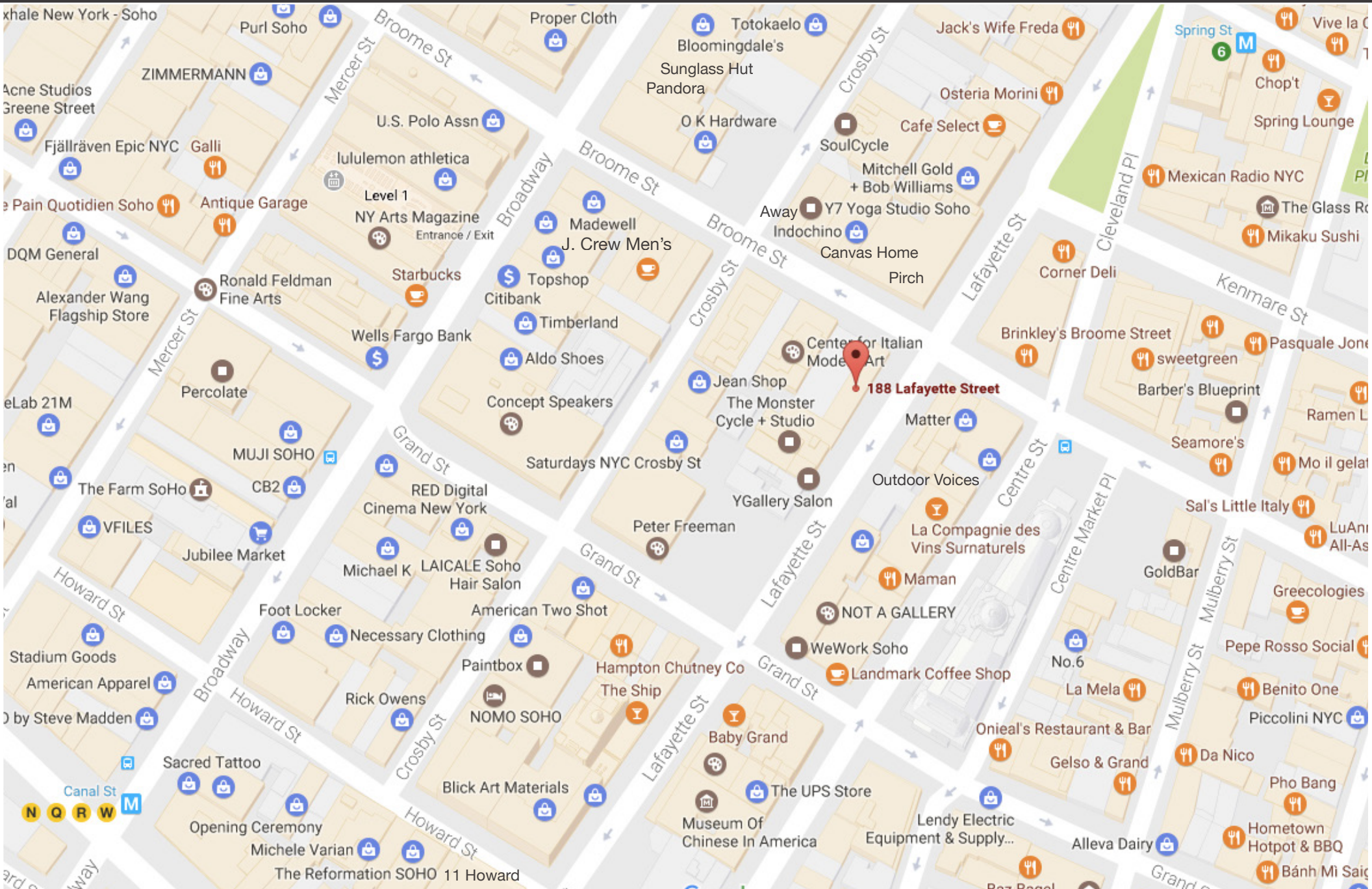
Basement
2,200 RSF



LAFAYETTE STREET

BROOME STREET

Area Map



Greg Kim 646 470 1717
greg@sequoiapg.com | www.sequoiapg.com

SEQUOIA
PROPERTY GROUP

© Sequoia Property Group. All rights reserved. All information contained herein is from sources deemed reliable; however, no representation or warranty is made to the accuracy thereof.